



GMA GARNET™ **BLAST ABRASIVES**

Selecting the right abrasive for your project.

engineered to perform

The GMA Garnet™ Advantage

GMA Garnet™ is a strong natural mineral that outperforms other abrasives when used in conjunction with the recommended equipment and air pressure. Due to GMA Garnet's inherent strength in Hardness, Toughness (low friability), Density, and Angularity our products perform efficiently when blasted. This results in higher productivity, minimal dust, and a cleaner, uniform surface finish, ready for coating.

1 Hardness

GMA Garnet™ has a higher relative resistance to abrade a surface compared to other abrasives.

2 Toughness

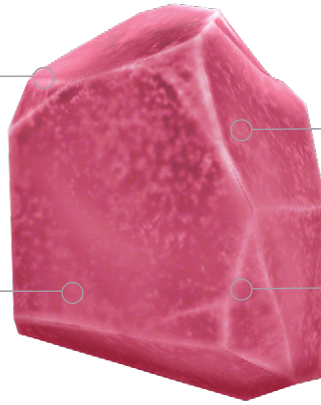
To remove surface coatings effectively, an abrasive must be tough enough to resist fracturing on impact.

3 Density

GMA's heavier, denser abrasive grain outperforms a less dense abrasive. GMA Garnet™ grains create a deeper, consistent anchor profile when blasted at the same pressure.

4 Angularity

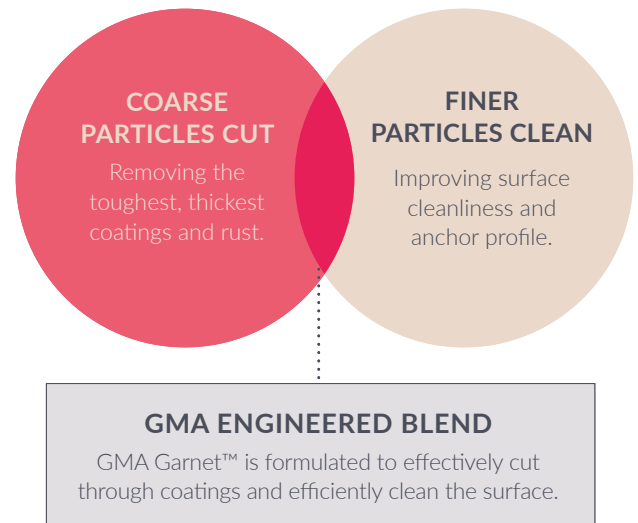
Angular grains produce a sharper anchor profile, whilst rounded grains produce a more even, smooth profile.



Multi-Dimensional Engineered Blends

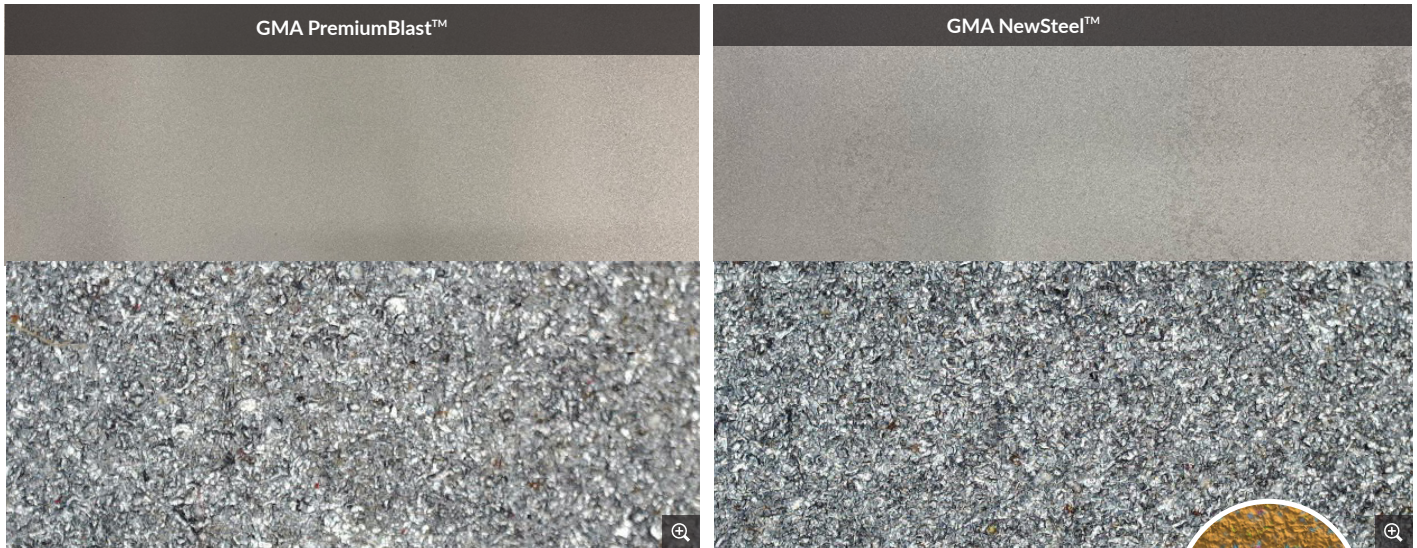
Typical blasting abrasive media is generally one-dimensional, consisting of either concentrated coarse particles or concentrated finer particles.

Having a wider particle size distribution from GMA Engineered Blends helps optimize blasting performance as they are formulated to 'cut & clean' faster than traditional one-dimensional abrasive products. Coarser particles effectively 'cut' through the coating and generate the required profile depth, while finer particles 'clean' the anchor profile and improve the efficiency of the blasting process.



A Cleaner Surface Increases Coating Life

In the short term, a cleaner surface can reduce inspection failures and keep projects on schedule. The benefits are even greater in the long term, with improved coating integrity resulting in a longer coating life. **GMA Garnet™ products consistently produce a cleaner surface - minimising secondary cleaning, keeping projects on schedule and improving coating integrity.**

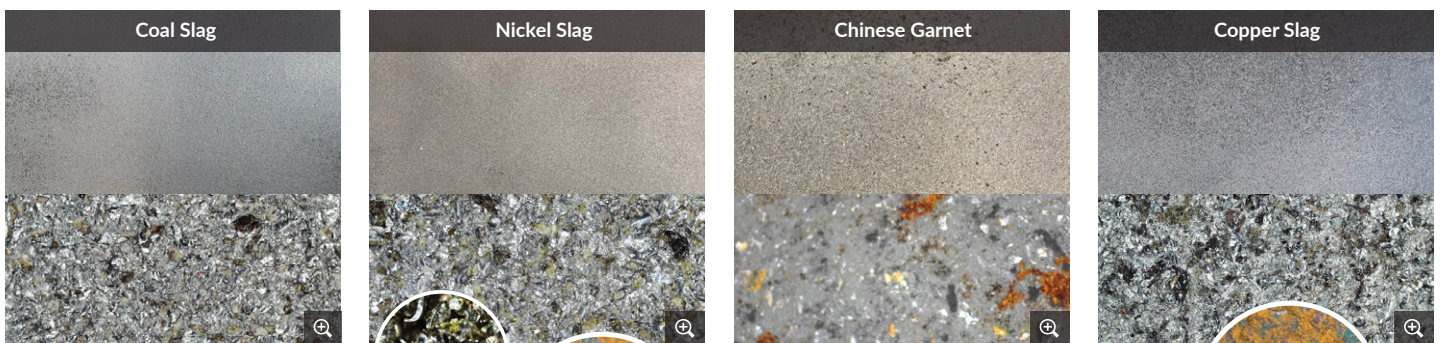


75x magnification

An immaculately clean blasted steel surface (represented in orange) at 100x magnification* after blasting with GMA NewSteel™. It shows minute embedment particles on the surface.

Waste Slags Produce up to 75% of Abrasive Embedment

Blasting with typical waste slags can result in small abrasive particles embedding into the surface. Viewing a blasted surface with the naked eye can be deceiving, as magnification shows that on average 60% of a slag blasted surface is embedded with residual abrasive. **Typical embedment levels from slag blasting can cause corrosion and blistering, resulting in high rework costs or possible warranty claims.**



Traces of Nickel slag (green) is clearly visible on the blasted steel surface.

Blasted steel surface (represented in orange) at 100x magnification* using a typical nickel slag, demonstrating 60% contamination on the surface.

Blasted steel surface (represented in orange) at 100x magnification* using a typical copper slag, demonstrating 65% contamination on the surface.

75x magnification

Measured using Scanning Electron Microscope (SEM), Backscattered Electron (BSE) and digital analysis.



GMA's Technical Experts can help reduce overall project costs by 15-30%*

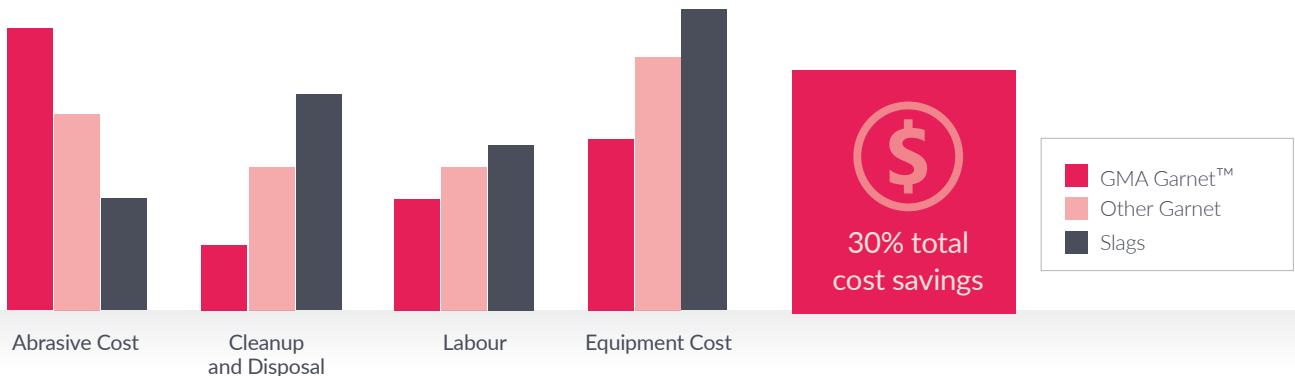
Our dedicated sales, technical and application specialists provide expertise in selecting the best products, industry know-how and resources to help solve coating removal and surface preparation problems.

*The information and claims stated are provided as a general purpose guide. Abrasive, labour, clean up, equipment and disposal costs vary from project to project. Actual project and productivity cost results could be materially different from projected results expressed or implied.

Reduce Overall Project Costs

GMA Garnet™ results in higher productivity and lower abrasive consumption, despite the higher initial product cost compared to slags. With GMA Garnet™ you can **save 15% to 30% on a typical project** due to lower clean-up and equipment costs, and reduced labour and blasting time. This makes GMA Garnet™ far more effective and efficient than other abrasives in the market.

TOTAL BLASTING COST



Although the typical slag abrasives cost lower per tonne, these are often inferior in quality and performance, resulting in lower productivity at a higher consumption rate. In fact, more slag abrasive is needed to complete a project. This dramatically increases your clean-up, disposal, labour and equipment costs, and ultimately increases your total project costs.



Higher productivity

Superior cleaning rate against other abrasives



Cost Effective

Lower garnet consumption, labour, clean up and disposal cost



Superior Surface Finish

Exceptionally clean surface and uniform profile



Safer

Meets all industry government safety and environmental standards



Our Abrasive Blast Product Line

Selecting the right abrasive for your project specifications can be a difficult task. We have a range of garnet abrasives available for any surface preparation requirement, from removing resistant coatings and heavy rust, to polishing glass and delicate restoration work.

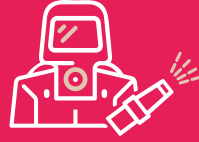
Product	Performance*	Application
<p>GMA Garnet™ 25/40</p> <p>Our coarsest grade garnet for removing coatings of 30+ mil.</p>	<p>Removal of exceptionally resistant specialty coatings, thick mil tank liners and marine foulings.</p> <ul style="list-style-type: none"> • Uniform surface profile: 3.5 - 4.5 mil • Blasting rates: 260 ft²/hr • Consumption rates: As low as 2 lb/ft². 	<ul style="list-style-type: none"> • Removal of 30+ mil (762 μm) coatings • Heavy industrial maintenance on tank liners, coal tar, heavy marine coatings and fouling • High build coating removal • Offshore platform deck coatings • TSA Removal and Preparation • Ship hulls and ballast tanks.
<p>GMA Garnet™ 30/60</p> <p>Exceptionally fast blasting for removal of light to medium coatings & rust.</p>	<p>Fast removal of medium coatings and/or medium rust.</p> <ul style="list-style-type: none"> • Uniform surface profile: 2.0 - 3.0 mil • Blasting rates: Up to 360 ft²/hr • Consumption rates: As low as 1.5 lb/ft² 	<ul style="list-style-type: none"> • General industrial maintenance • Light rust and low-medium mil coatings • Powder coating removal and preparation • Wet abrasive blasting maintenance grade • Construction and maintenance on tanks, pipes, pressure vessels and offshore platform decking.

*Production and consumption rates may vary based on nozzle size, pressure at the nozzle, standoff distance, abrasive metering, equipment quality, surface type, coating type and thickness. The blasting rates are achieved by setting the nozzle pressure to operate within the range of 95 psi to 100 psi. GMA will work with you to produce optimum performance on blasting jobs, reducing time and cost, and producing the best surface result for any coating.

The Preferred Industry Choice

GMA offers a complete range of abrasives for any surface preparation requirement from removing resistant coatings and heavy rust, to fast mill scale removal and speciality coating requirements.

GMA Garnet™ is approved by leading paint manufacturers, and is the preferred abrasive among global oil & gas companies, full-service shipyards and international fabricators.



INDUSTRIAL CORROSION CONTROL

Rust Removal, Surface Preparation, Coating Integrity



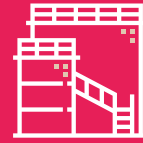
INFRASTRUCTURE

Construction and bridges



MARITIME & MILITARY

Shipbuilding and Repair



METAL FABRICATION

Mill Scale Removal, Petroleum Plant, Storage and Pipelines, Structural Steel



OIL & GAS, MINING

Plant Integrity and Maintenance



gmagarnet.com