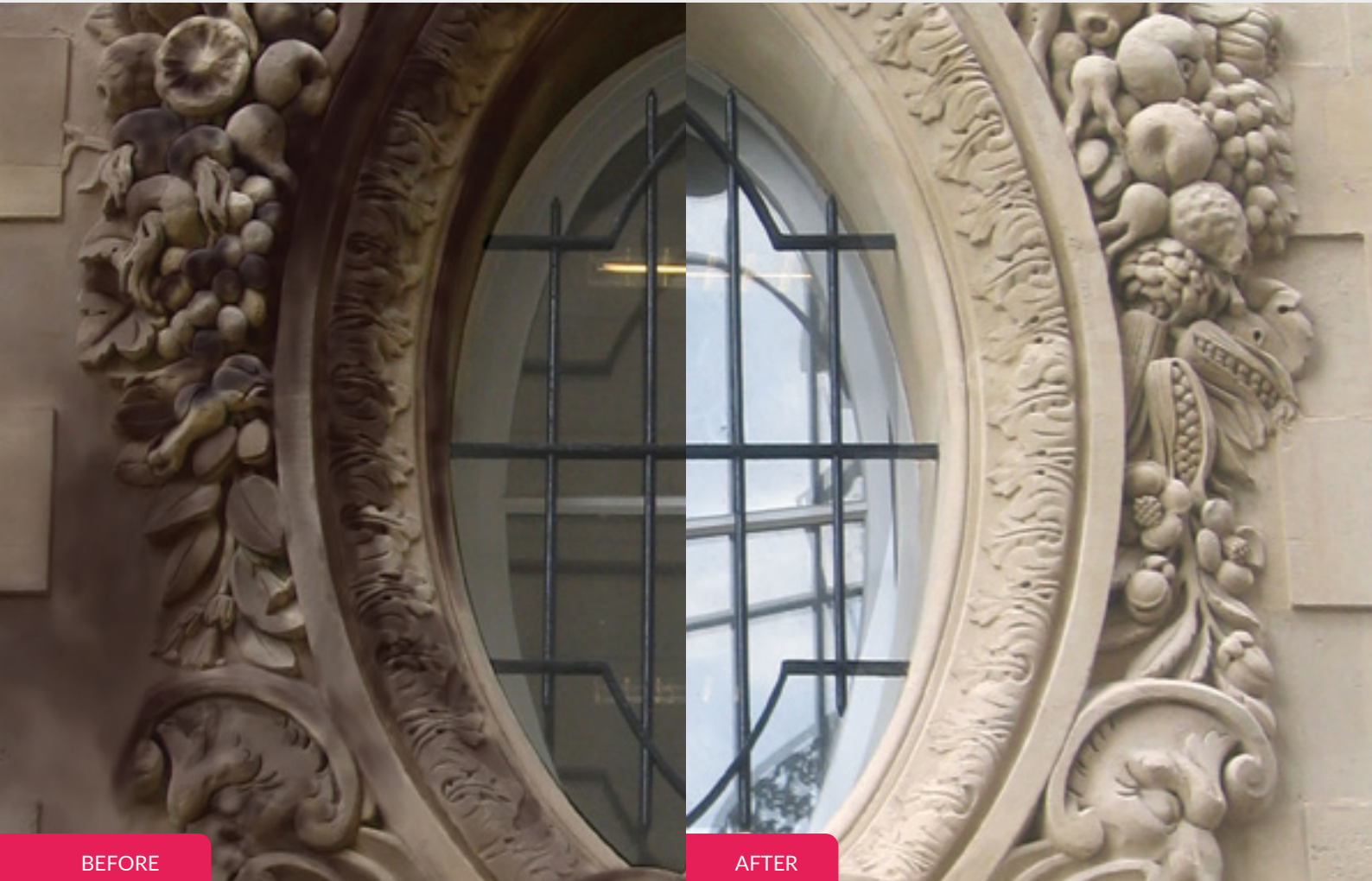




GMA Fine and GMA Superfine

HIGHER PRODUCTIVITY | COST EFFECTIVE | SUPERIOR SURFACE FINISH | SAFER



GMA Micronised Garnet Products for Vulnerable Surfaces and Precision Applications

GMA Fine and GMA Superfine garnet products are processed using state of the art technology to ensure consistent high quality.

The combination of high mineral purity, total grain angularity and consistent sizing ensures high performance cleaning, etching and polishing.

GMA will work with you to produce optimum performance on blasting jobs, reducing time and cost, and producing the best result.





Higher productivity

Superior cleaning rate against other abrasives.



Superior Surface Finish

Exceptionally clean surface and uniform profile.



Cost Effective

Lower garnet consumption, labour, clean up and disposal cost.



Safer

Meets all industry, government safety and environmental standards.



| Fine | Application |
|------|-------------|
|------|-------------|

Ideal for fast and gentle cleaning of precision equipment and vulnerable surfaces.

- Removing mill scale (less than 10 micron profile), preparing ferrous and non-ferrous metal, and easily damaged or deformed substrate.
- Blasting of galvanized coatings, stainless steel, aluminium and alloys. Blast etching for glass frosting.
- An efficient alternative to hand-tooling for cleaning precision equipment and components such as gauges, turbines, propellers, valve bodies, threads and bolts. Preparation for weld seam inspections.
- Finer abrasive blasting cleaner for substrates such as glass, fibreglass, plastics, softer metals, automobiles, stone/brick/timber restoration and graffiti removal.
- Concrete maintenance and surface preparation of concrete formwork.
- Available in 200 mesh.

| Superfine | Application |
|-----------|-------------|
|-----------|-------------|

Ideal for extremely delicate blasting, cleaning and polishing of the most delicate and sensitive surfaces.

- Removing mill scale (less than 5 micron profile), graffiti removal, preparing softer metals, polishing, and lapidary.
- Exceptional cleaning requirements such as tackling extreme adhesion and cleaning heavy pitting.
- Removing gloss from plastic before applying a coating.
- Removing paint one layer at a time without causing heat affected zones on metal surfaces.
- Blast cleaning around valves and gauges in refineries and production plants.
- Blast etching of glass, aluminium, plastics and composites.
- Cleaning heritage landmarks made of brick and sensitive stone. Automotive and antique restoration.
- De-burring and polishing of masonry, castings and optical glass components.
- Available in 350 mesh.



Secure Supply



Consistent Quality



Technical Expertise



Customer Focus



Abrasive Blasting



Waterjet Cutting



Recycling

For more information, write to:
info.eu@gmagarnet.com or visit gmagarnet.com

